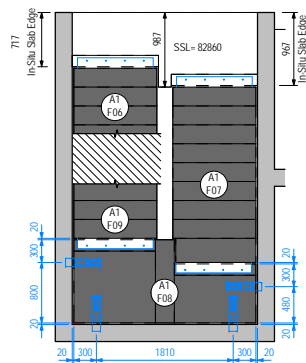
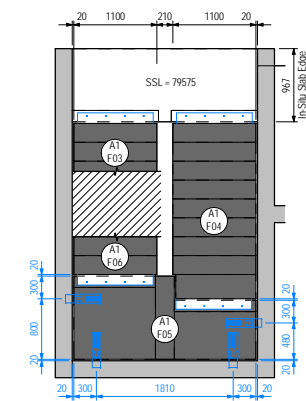


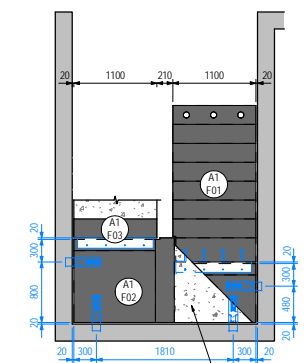
4 A1 - 4th Floor
1:50



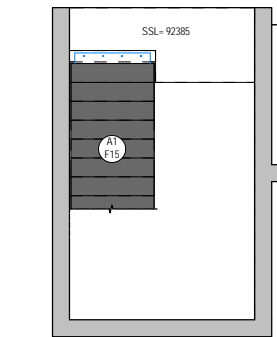
3 A1 - 3th Floor
1:50



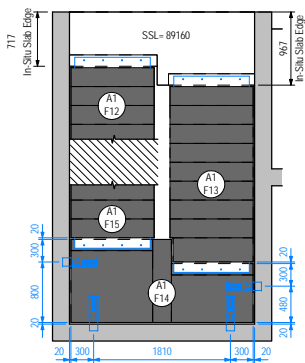
2 A1 - 2nd Floor
1:50



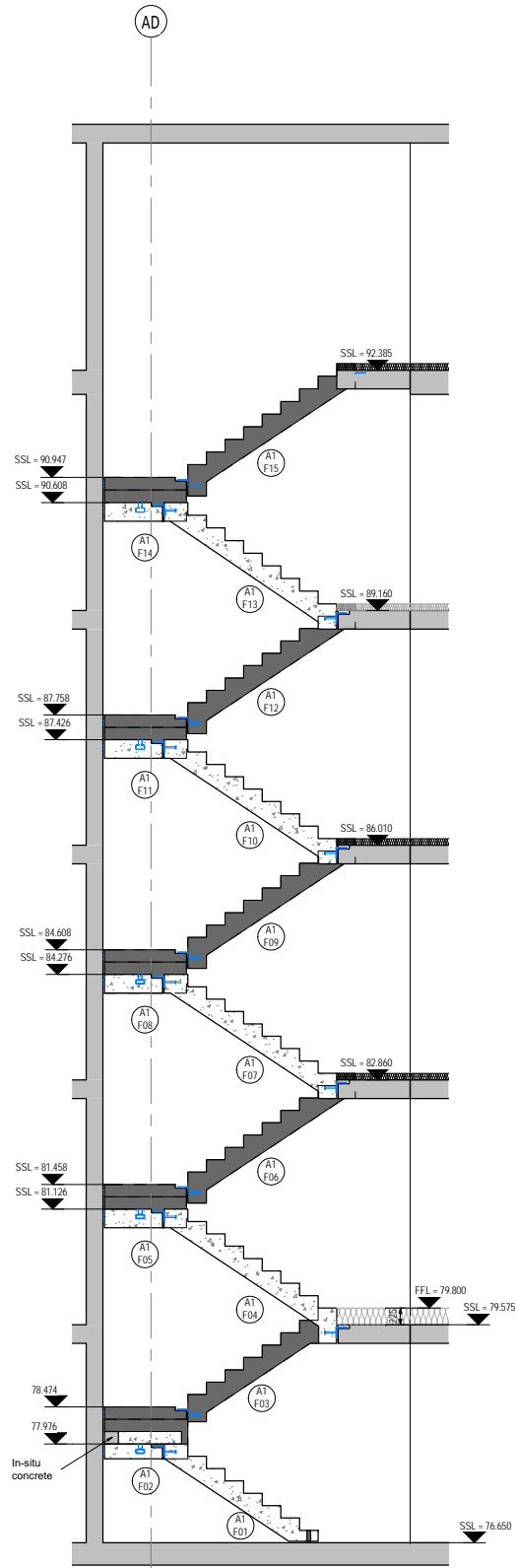
1 A1 - 1st Floor
1:50



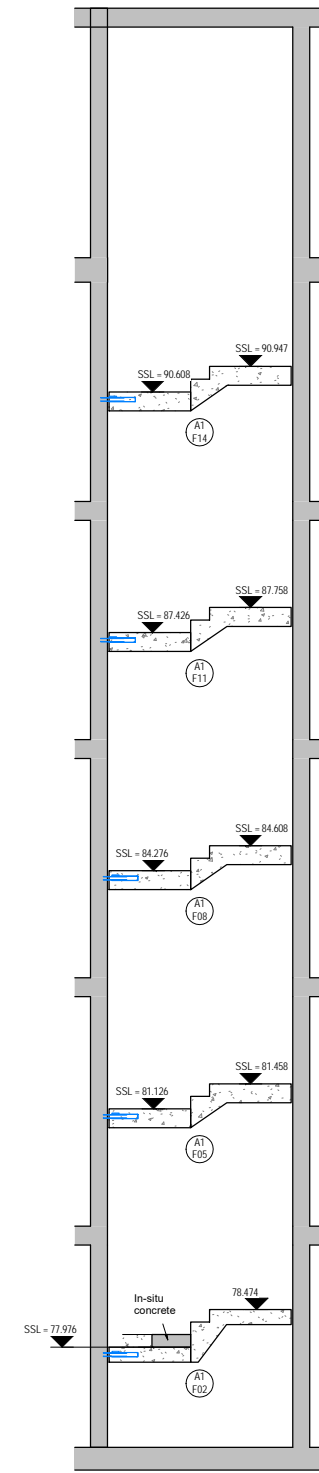
6 A1 - 6th Floor
1:50



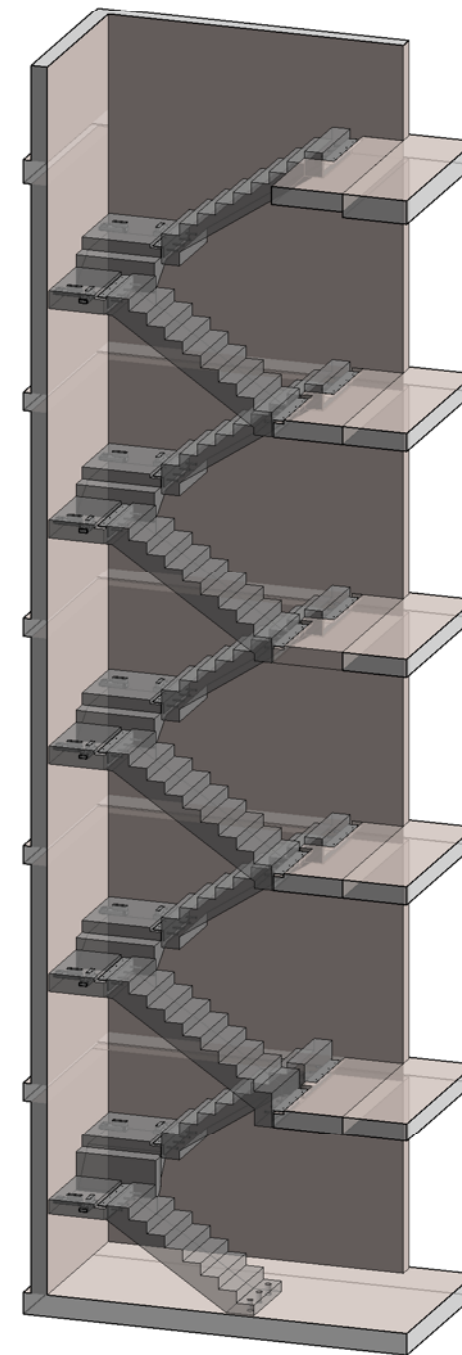
5 A1 - 5th Floor
1:50



A Section A-A
1:50



B Section B-B
1:50



3D 3D View

Legend:

- Lifting Pins: PCT - LSF50/120 or equivalent
- Steel Bolt
- Invisible Connections: RVK 101 (Standard Version)
Recess Void Former: REDIBOX® PRF-STD (Standard Version)

Block A1 - Precast Stairs - Weight	
Mark	Weight
A1 F01	1662 kg
A1 F02	1618 kg
A1 F03	1920 kg
A1 F04	2137 kg
A1 F05	1505 kg
A1 F06	2082 kg
A1 F07	2046 kg
A1 F08	1505 kg
A1 F09	2082 kg
A1 F10	2046 kg
A1 F11	1505 kg
A1 F12	2082 kg
A1 F13	2069 kg
A1 F14	1510 kg
A1 F15	2117 kg

Notes:

1. Do not scale from this drawing. Use figure dimensions only.
2. This drawing is to be read in conjunction with all related Architects, Consultants & Sub-Contractors drawings and specifications.
3. The contractor is advised that all design drawings and information are to be read concurrently and any discrepancies or omissions reported directly to Simtrical Structural Department.
4. The contents of this drawing may not be reproduced in whole or in part without the prior written permission of Simtrical Ltd.
5. Cover to main reinforcement to be **35mm**.
6. Typical cover to stair angle is **25mm**.
7. Fire rating = **90 minutes**.
8. Concrete grade: **C40/50**.
9. No alteration to the precast elements should be carried out without permission from GCL design dept.
10. If the screed to landing is to be placed by concrete skip then the conc. should not be dropped from a height greater than 600mm above the P.C. units.
11. The construction load should not exceed 1.5 kN/m² + weight of screed.
12. All the precast elements have a 20mm gap tolerance in every direction UNO.
13. Tolerance gap between precast stair support & landing to be filled by main contractor.
14. Lifting: Stairs & slabs must be lifted using all the lifting eyes provided.
15. For typical connection details see GCL drawing: MIL2-GCL-Z1-XX-DET-S-2501

Rev	Description	By	Date	CHKD
C04	Fire period note revised.	SP	07.08.2019	SC
C03	Revised to latest comments.	SP	01.08.2019	SC
C02	Invisible Connections setting out and SSL on half landing revised where cluded. In-Situ slab edge added. Issued by email, not on 4P.	SP	26.07.2019	SC



3 Horizon Place, Studio Way
Borehamwood
Hertfordshire, WD6 5FP

T: +44 (0) 208 238 7600
W: www.simtrical.co.uk
E: office@simtrical.co.uk

Client Details:
ECOWORLD INTERNATIONAL

Project Details:
MILLBROOK PARK - PHASE 2

Drawing Title:
BLOCK A - STAIR CORE A1 PRECAST STAIRS

Scale	Date	Drawn By	Checked By	Approved By
As Indicated	June '19	SP	SP	SP

S4 (Construction Issue)	
Drawing Number	Revision
MIL2-GCL-Z1-ZZ-DR-S-2101	C04