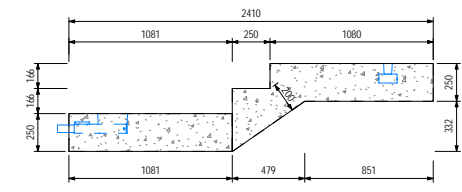
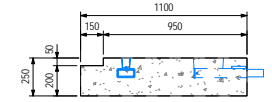


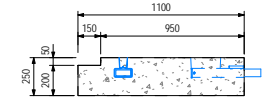
Section A-A  
1:25



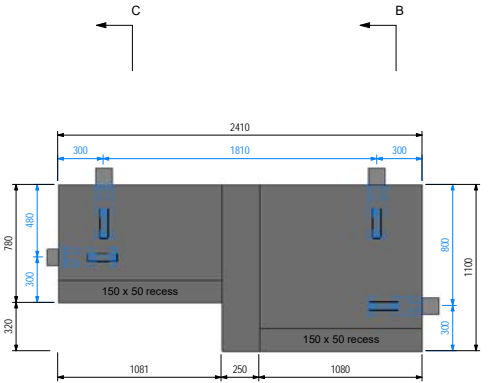
Section D-D  
1:25



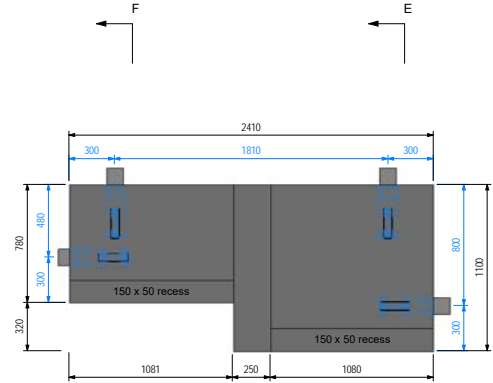
Section B-B  
1:25



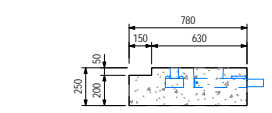
Section E-E  
1:25



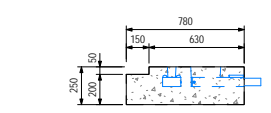
1 A1 F05  
1:25



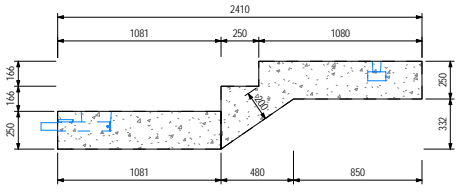
2 A1 F08  
1:25



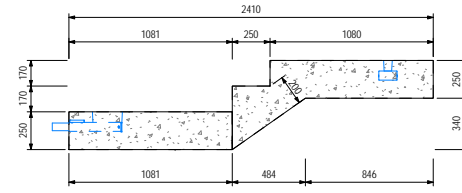
Section C-C  
1:25



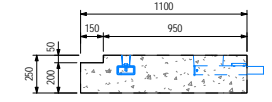
Section F-F  
1:25



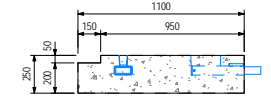
Section G-G  
1:25



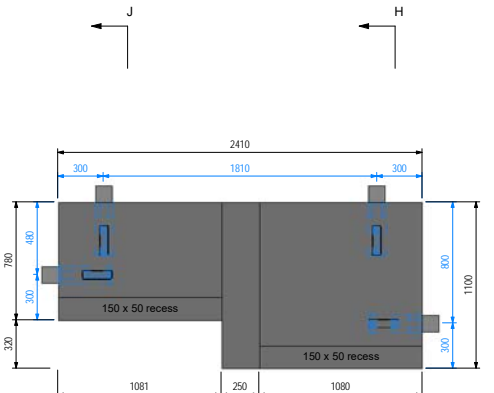
Section K-K  
1:25



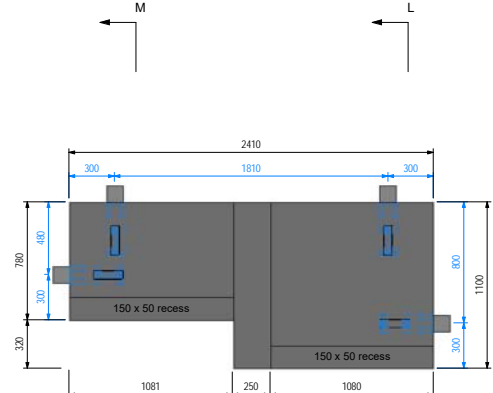
Section H-H  
1:25



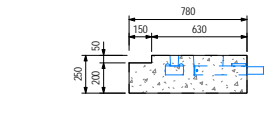
Section L-L  
1:25



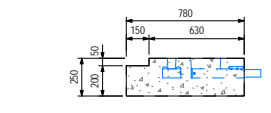
3 A1 F11  
1:25



4 A1 F14  
1:25



Section J-J  
1:25



Section M-M  
1:25

- Notes:
- Do not scale from this drawing. Use figure dimensions only.
  - This drawing is to be read in conjunction with all related Architects, Consultants & Sub-Contractors drawings and specifications.
  - The contractor is advised that all design drawings and information are to be read concurrently and any discrepancies or omissions reported directly to Simtrical Structural Department.
  - The contents of this drawing may not be reproduced in whole or in part without the prior written permission of Simtrical Ltd.
  - Cover to main reinforcement to be 35mm.
  - Typical cover to stair angle is 25mm.
  - Fire rating = 90 minutes.
  - Concrete grade: C40/50.
  - No alteration to the precast elements should be carried out without permission from GCL design dept.
  - If the screed to landing is to be placed by concrete skip then the conc. should not be dropped from a height greater than 600mm above the P.C. units.
  - The construction load should not exceed 1.5 kN/m<sup>2</sup> + weight of screed.
  - All the precast elements have a 20mm gap tolerance in every direction UNO.
  - Tolerance gap between precast stair support & landing to be filled by main contractor.
  - Lifting: Stairs & slabs must be lifted using all the lifting eyes provided.
  - For typical connection details see GCL drawing: MIL2-GCL-Z1-XX-DET-S-2501

Rev	Description	By	Date	CHKD
C03	Fire period note revised.	SP	07.08.2019	SC
C02	Revised to latest comments.	SP	01.08.2019	SC
C01	First issue.	SP	26.07.2019	SC



3 Horizon Place, Studio Way  
Borehamwood  
Hertfordshire, WD6 5FP  
T: +44 (0) 208 238 7600  
W: www.simtrical.co.uk  
E: office@simtrical.co.uk

Client Details:  
ECOWORLD INTERNATIONAL

Project Details:  
MILLBROOK PARK - PHASE 2

Drawing Title:  
BLOCK A - STAIR CORE A1 PRECAST STAIRS  
ELEMENTS (SHEET 3)

Scale	Date	Drawn By	Checked By	Approved By
1:25	07/01/19	SP	SP	SP

Status:  
S4 (Construction Issue)

Drawing Number	Revision
MIL2-GCL-Z1-ZZ-DR-S-2104	C03