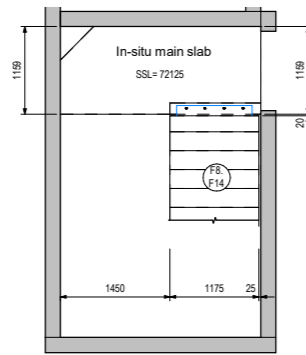
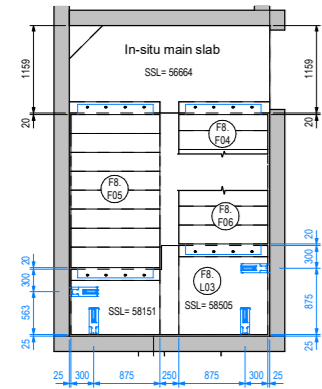


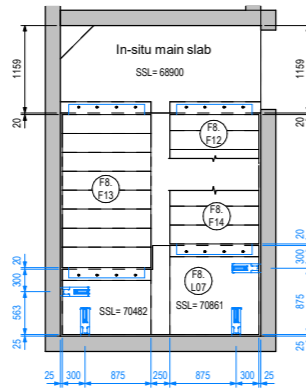
03 F8 - 3rd Floor  
1:50



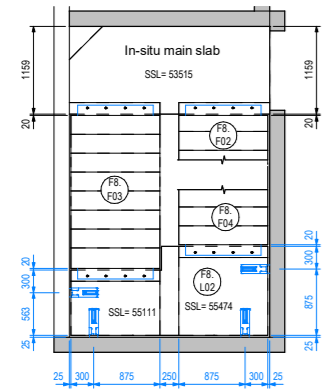
07 F8 - 7th Floor  
1:50



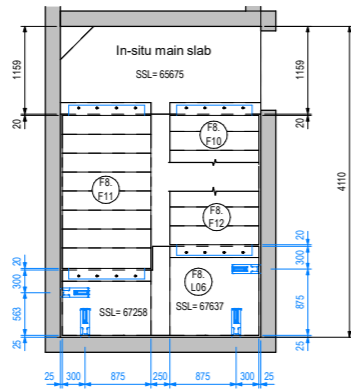
02 F8 - 2nd Floor  
1:50



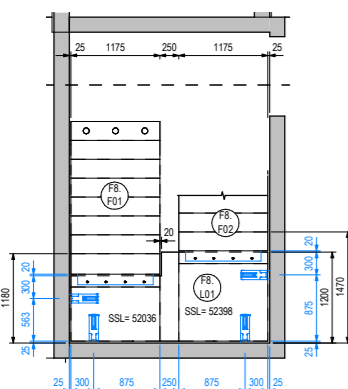
06 F8 - 6th Floor  
1:50



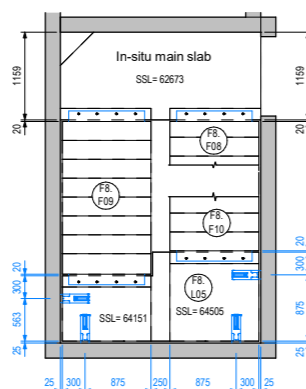
01 F8 - 1st Floor  
1:50



05 F8 - 5th Floor  
1:50

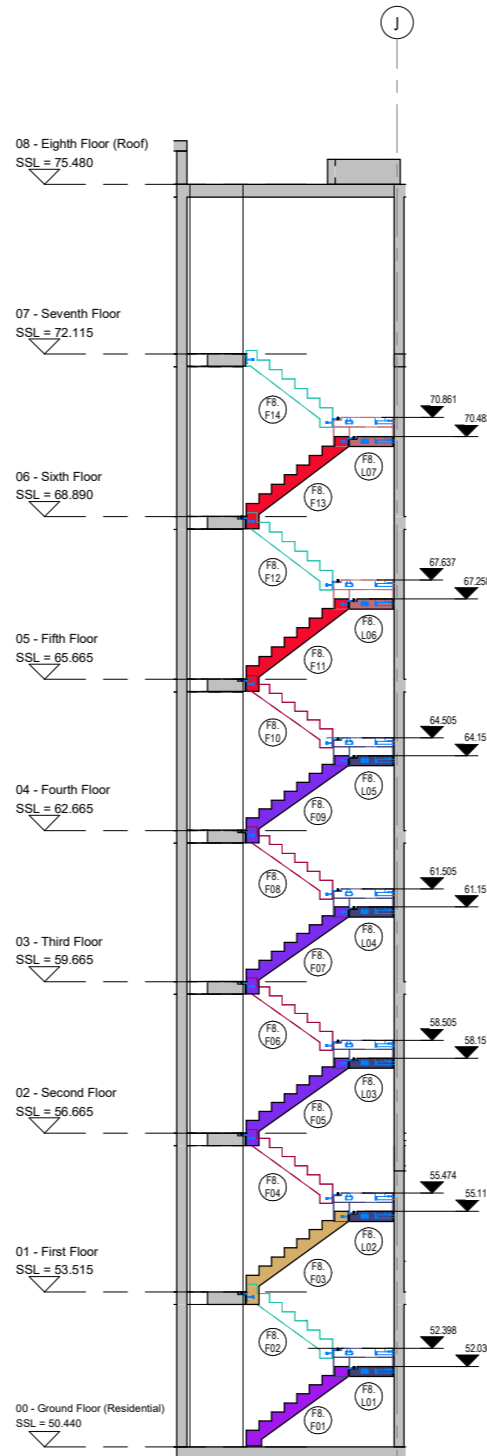


00 F8 - Ground Floor  
1:50

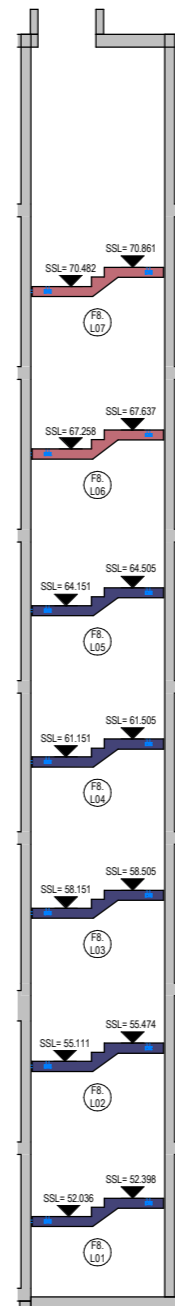


04 F8 - 4th Floor  
1:50

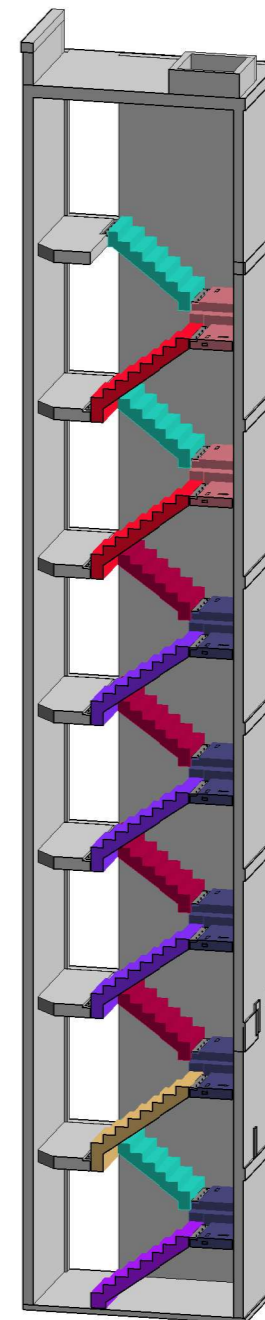
Mark	Weight
FB. F01	1821 kg
FB. F02	1652 kg
FB. F03	2015 kg
FB. F04	1610 kg
FB. F05	1937 kg
FB. F06	1592 kg
FB. F07	1929 kg
FB. F08	1592 kg
FB. F09	1929 kg
FB. F10	1592 kg
FB. F11	2001 kg
FB. F12	1653 kg
FB. F13	2001 kg
FB. F14	1654 kg
FB. L01	1451 kg
FB. L02	1451 kg
FB. L03	1450 kg
FB. L04	1450 kg
FB. L05	1450 kg
FB. L06	1463 kg
FB. L07	1463 kg



A Section A-A  
1:75



B Section B-B  
1:75



3D Stair Core F8

- Notes:
- Do not scale from this drawing. Use figure dimensions only.
  - This drawing is to be read in conjunction with all related Architects, Consultants & Sub-Contractors drawings and specifications.
  - The contractor is advised that all design drawings and information are to be read concurrently and any discrepancies or omissions reported directly to Simtrical Structural Department.
  - The contents of this drawing may not be reproduced in whole or in part without the prior written permission of Simtrical Ltd.
  - Stairs and landings are designed to carry the following loads in addition to self weight:  
Live load: 3.00 kN/m<sup>2</sup>  
Finishes: 1.20 kN/m<sup>2</sup>
  - Concrete grade: C50/60
  - Cover to main reinforcement: 35mm.
  - Fire rating = 120 minutes.
  - No alteration to the precast elements should be carried out without permission from GCL design dept.
  - All the precast elements have a 25mm gap tolerance to core walls and 20mm elsewhere UNO.
  - Tolerance gap between precast stair support & landing to be filled by main contractor.
  - Lifting: Stairs & slabs must be lifted using all the lifting eyes provided.
  - For typical connection detail see GCL drawing: 160088-GCL-ZZ-DR-S-2001
  - For IC additional reinforcement detail see GCL drg: 160088-GCL-F1-ZZ-DR-S-2101...2104  
160088-GCL-F2-ZZ-DR-S-2201...2204  
160088-GCL-F8-ZZ-DR-S-2801...2804  
160088-GCL-F9-ZZ-DR-S-2901...2904

Rev	Description	By	Date	Chk'd
P01	First issue.	SP	11.03.19	SC



3 Horizon Place, Studio Way  
Borehamwood  
Hertfordshire, WD6 5FP  
T: +44 (0) 1404 134 433  
W: www.simtrical.co.uk  
E: office@simtrical.co.uk

Client Details:  
St George

Project Details:  
Beaufort Park - Buildings F1, F2, F8 & F9

Drawing Title:  
Block F8 - Stair Core Precast Stairs Layout

Scale	Date	Drawn By	Checked By	Approved By
As indicated	11.03.19	SP	SP	SP

Status:  
Preliminary

Drawing Number	Revision
160088-GCL-F8-ZZ-DR-S-2800	P01