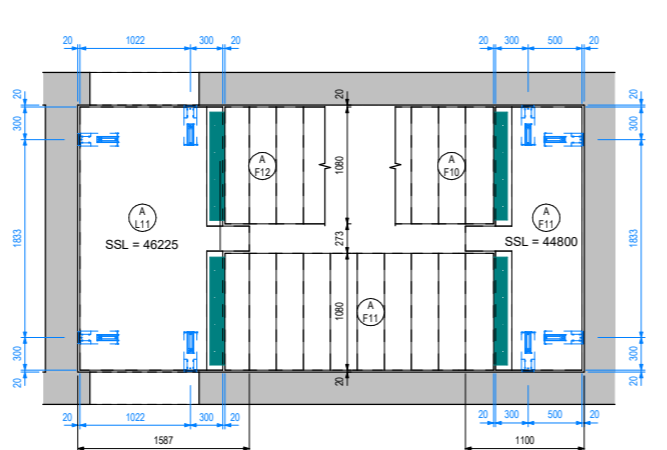
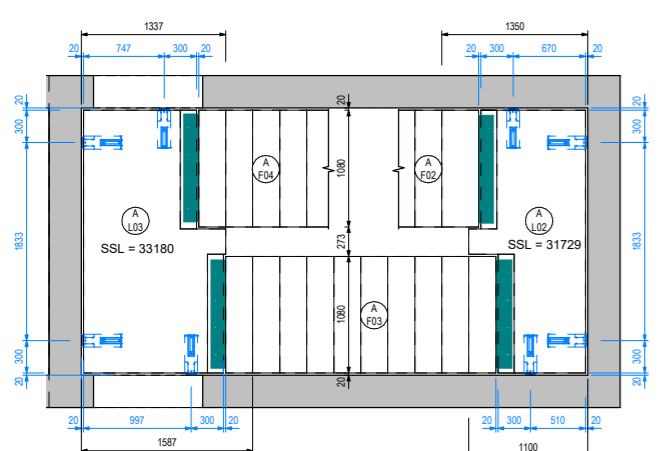


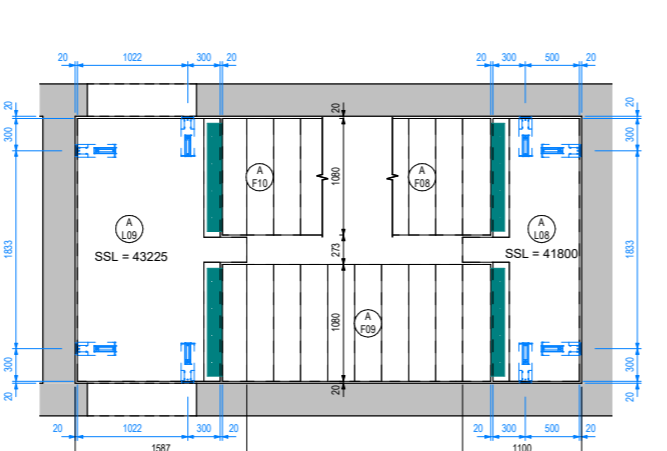
1 Stair Core A - 01 Level
1:35



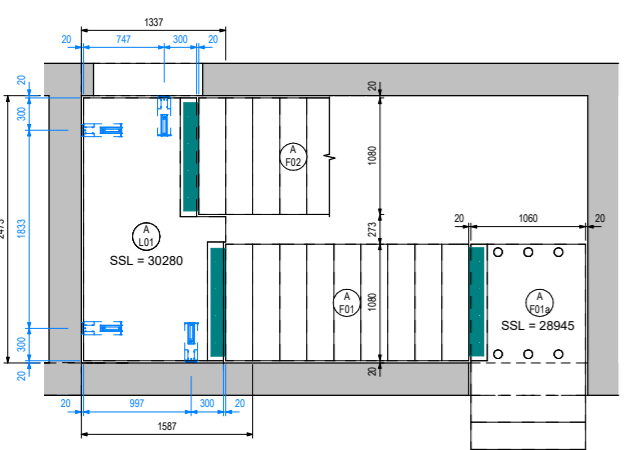
4 Stair Core A - 04 to 24 Level (Typical)
1:35



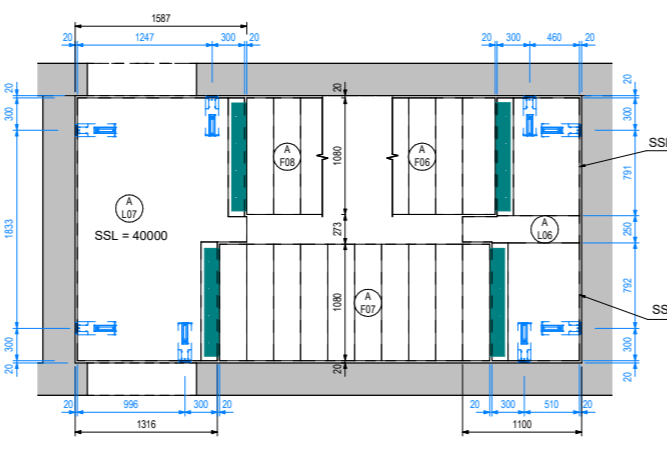
0 Stair Core A - 00 Level
1:35



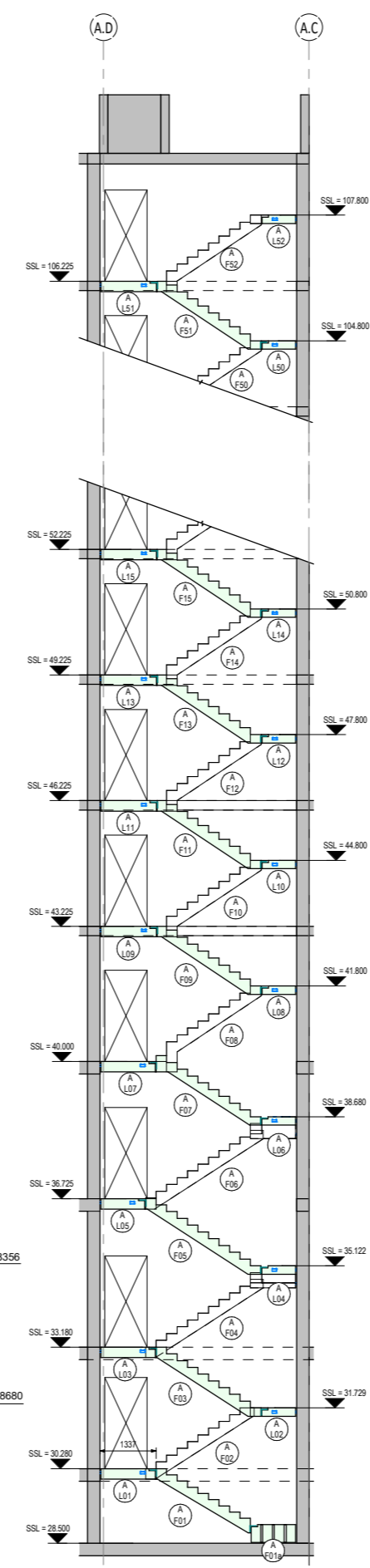
3 Stair Core A - 03 Level
1:35



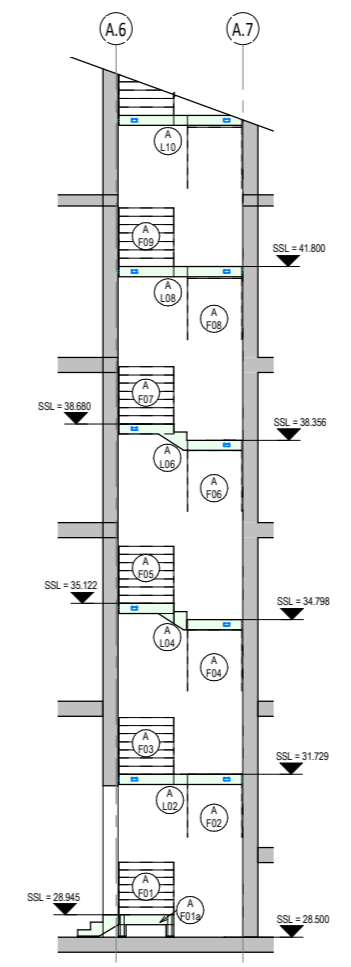
-1 Stair Core A - B1 Level
1:35



2 Stair Core A - 02 Level
1:35



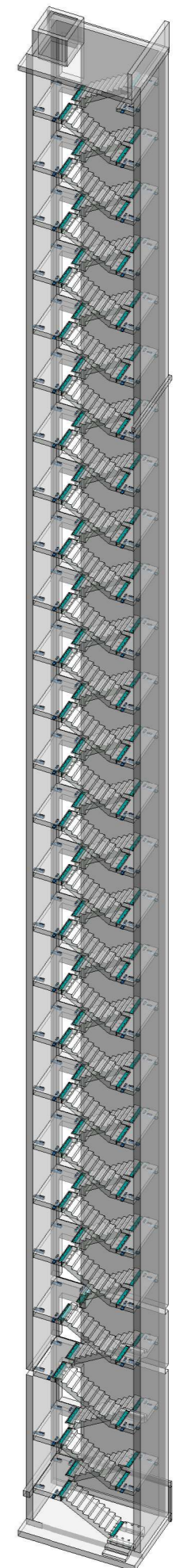
A Section A-A
1:75



B Section B-B
1:75

Mark	Weight
A F01	1861 kg
A F01a	1206 kg
A F02	2155 kg
A F03	2067 kg
A F04	2353 kg
A F05	2291 kg
A F06	2356 kg
A F07	1972 kg
A F08	2238 kg
A F09	2050 kg
A F10	2238 kg
A F11	2050 kg
A F12	2238 kg
A F13	2050 kg
A F14	2238 kg
A F15	2050 kg
A F16	2238 kg
A F17	2050 kg
A F18	2238 kg
A F19	2050 kg
A F20	2238 kg
A F21	2050 kg
A F22	2238 kg
A F23	2050 kg
A F24	2238 kg
A F25	2050 kg
A F26	2238 kg
A F27	2050 kg
A F28	2238 kg
A F29	2050 kg
A F30	2238 kg
A F31	2050 kg
A F32	2238 kg
A F33	2050 kg
A F34	2238 kg
A F35	2050 kg
A F36	2238 kg
A F37	2050 kg
A F38	2238 kg
A F39	2050 kg
A F40	2238 kg
A F41	2050 kg
A F42	2238 kg
A F43	2050 kg
A F44	2238 kg
A F45	2050 kg
A F46	2238 kg
A F47	2050 kg
A F48	2238 kg
A F49	2050 kg
A F50	2238 kg
A F51	2050 kg
A F52	2238 kg

Mark	Weight
A L01	1762 kg
A L02	1058 kg
A L03	1762 kg
A L04	1090 kg
A L05	1590 kg
A L06	1090 kg
A L07	2141 kg
A L08	959 kg
A L09	2005 kg
A L10	959 kg
A L11	2005 kg
A L12	959 kg
A L13	2005 kg
A L14	959 kg
A L15	2005 kg
A L16	959 kg
A L17	2005 kg
A L18	959 kg
A L19	2005 kg
A L20	959 kg
A L21	2005 kg
A L22	959 kg
A L23	2005 kg
A L24	959 kg
A L25	2005 kg
A L26	959 kg
A L27	2005 kg
A L28	959 kg
A L29	2005 kg
A L30	959 kg
A L31	2005 kg
A L32	959 kg
A L33	2005 kg
A L34	959 kg
A L35	2005 kg
A L36	959 kg
A L37	2005 kg
A L38	959 kg
A L39	2005 kg
A L40	959 kg
A L41	2005 kg
A L42	959 kg
A L43	2005 kg
A L44	959 kg
A L45	2005 kg
A L46	959 kg
A L47	2005 kg
A L48	959 kg
A L49	2005 kg
A L50	959 kg
A L51	2005 kg
A L52	959 kg



- Notes:
- Do not scale from this drawing. Use figure dimensions only.
 - This drawing is to be read in conjunction with all related Architects, Consultants & Sub-Contractors drawings and specifications.
 - The contractor is advised that all design drawings and information are to be read concurrently and any discrepancies or omissions reported directly to Simtrical Structural Department.
 - The contents of this drawing may not be reproduced in whole or in part without the prior written permission of Simtrical Ltd.
 - Stairs and landings are designed to carry the following loads in addition to self weight:
Live load: 3.00 kNm²
Finishes: 1.50 kNm²
 - Concrete C40/F50.
 - Cover to main reinforcement to be 35mm.
 - Fire rating 90 minutes.
 - Typical cover to stair angle is 25mm.
 - No alteration to the precast elements should be carried out without permission from GCL design dept.
 - If the screed to landing is to be placed by concrete skip then the conc. should not be dropped from a height greater than 600mm above the P.C. units.
 - The construction load should not exceed 1.5 kNm² + weight of screed.
 - All the precast elements have a 20mm gap tolerance in every direction UNO.
 - Tolerance gap between precast stair support & landing to be filled by main contractor.
 - Lifting: Stairs & slabs must be lifted using all the lifting eyes provided.

Legend:

- ⊕ Lifting Pins: PCT - LSF50/120 or equivalent
- ⊕ Invisible Connections: RVK 101

Rev	Description	By	Date	CHKD
P01	First issue.	IC	25.11.2019	SP



3 Horizon Place, Studio Way
Borehamwood
Hertfordshire, WD6 5FP
T: +44 (0) 208 238 7650
W: www.simtrical.co.uk
E: office@simtrical.co.uk

Client Details:
HG CONSTRUCTION

Project Details:
MINAVILE HOUSE

Drawing Title:
Stair Core A - Precast Stairs Core GA

Date	Drawn By	Checked By	Approved By
Nov/19	IC	SP	SP

Preliminary

Drawing Number	Revision
GCL-A-DR-S-2011	P01