

East Stair Core - Precast Stairs - Weight

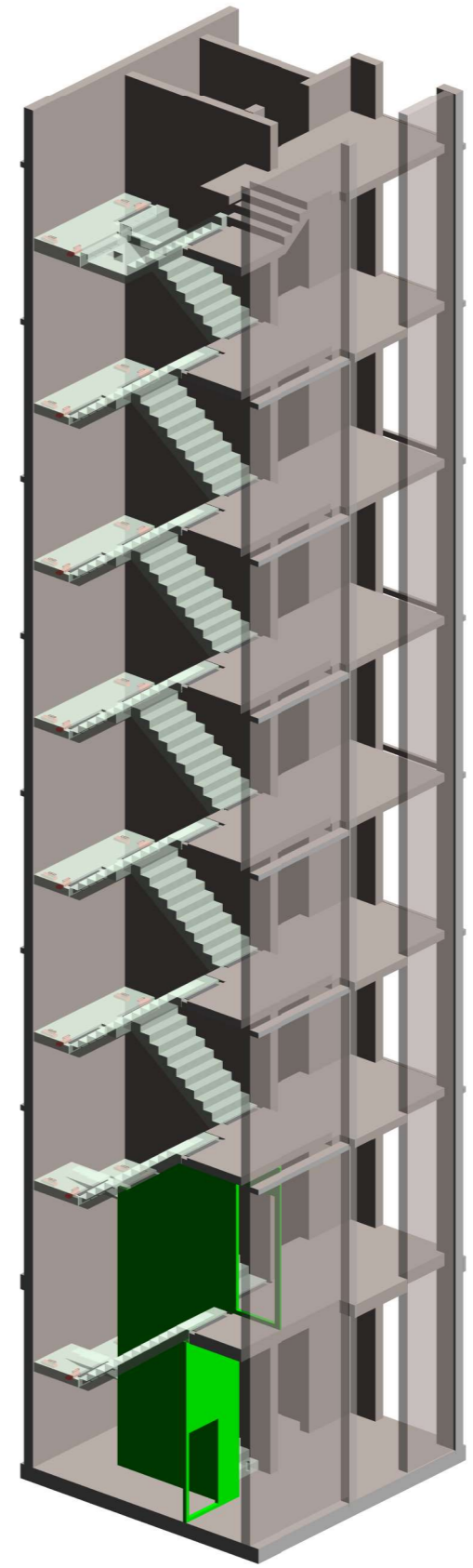
| Mark | Weight |
|-------|---------|
| E F01 | 2869 kg |
| E F02 | 1945 kg |
| E F03 | 3182 kg |
| E F04 | 2913 kg |
| E F05 | 2120 kg |
| E F06 | 2861 kg |
| E F07 | 2649 kg |
| E F08 | 3134 kg |
| E F09 | 2659 kg |
| E F10 | 3134 kg |
| E F11 | 2659 kg |
| E F12 | 3134 kg |
| E F13 | 2659 kg |
| E F14 | 3134 kg |
| E F15 | 2659 kg |
| E F16 | 3134 kg |
| E F17 | 2849 kg |
| E F18 | 3295 kg |

East Stair Core - Precast Slabs - Weight

| Mark | Weight |
|-------|---------|
| E L03 | 1625 kg |
| E L05 | 1625 kg |
| E L07 | 1625 kg |
| E L09 | 1625 kg |
| E L11 | 1625 kg |
| E L13 | 2433 kg |

Legend:

- Precast
- In-situ
- Invisible Connections: **RVK 101 - 30**
Restrain capacity: 30 kN
- Invisible Connections: **RVK 101 - 30 Modified**
Restrain capacity: 30 kN
- Invisible Connections: **RVK 101 - Standard**
Restrain capacity: 0 kN



- Notes:
- Do not scale from this drawing. Use figure dimensions only.
 - This drawing is to be read in conjunction with all related Architects, Consultants & Sub-Contractors drawings and specifications.
 - The contractor is advised that all design drawings and information are to be read concurrently and any discrepancies or omissions reported directly to Simtrical Structural Department.
 - The contents of this drawing may not be reproduced in whole or in part without the prior written permission of Simtrical Ltd.
 - Stairs and landings are designed to carry the following loads in addition to self weight:
Live load: 3.00 kN/m²
Finishes: 1.50 kN/m²
 - Cover to main reinforcement to be 35mm.
 - Typical cover to stair angle is 25mm.
 - No alteration to the precast elements should be carried out without permission from GCL design dept.
 - The construction load should not exceed 1.5 kN/m² + weight of screed.
 - All the precast elements have a 20mm gap tolerance in every direction UNO.
 - Tolerance gap between precast stair support & landing to be filled by main contractor.
 - Lifting: Stairs & slabs must be lifted using all the lifting eyes provided.
 - Blockwork load: 25kN/m³
 - For typical connection detail please see GCL drawings: 150-GCL-Z1-ZZ-DR-S-2000 & 150-GCL-Z1-ZZ-DR-S-2001

| Rev | Description | By | Date | CHKD |
|-----|--|----|------------|------|
| C07 | Updated to latest Architect comments. | SP | 17.01.2020 | SP |
| C06 | Precast stairs revised to latest Arch. drawings. | IC | 14.01.2020 | SC |
| C05 | Slabs updated to latest comments. | IC | 18.11.2019 | SC |
| C04 | Slabs updated to latest comments. | SP | 12.11.2019 | SC |



3 Horizon Place, Studio Way
Borehamwood
Hertfordshire, WD6 5FP
T: +44 (0) 208 238 7600
W: www.simtrical.co.uk
E: office@simtrical.co.uk

Client Details:
McLaren

Project Details:
150 Holborn

Drawing Title:
East Stair Core - Precast Stairs GA

| Scale | Date | Drawn By: | Checked By: | Approved By: |
|--------------|------------|-----------|-------------|--------------|
| As indicated | 31.07.2019 | SP | SP | SP |

Status:
S3

| Drawing Number | Revision |
|-------------------------|----------|
| 150-GCL-Z1-ZZ-DR-S-2100 | C07 |