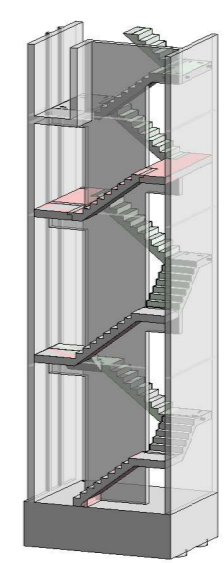
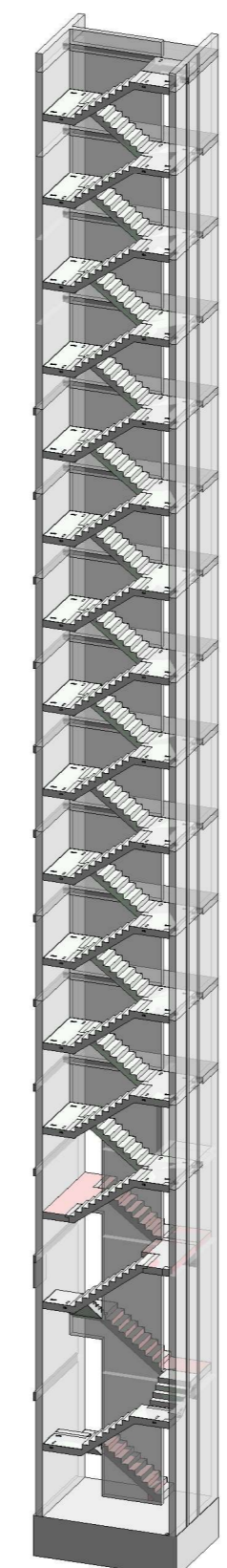
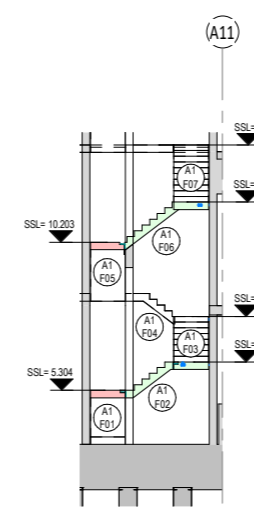
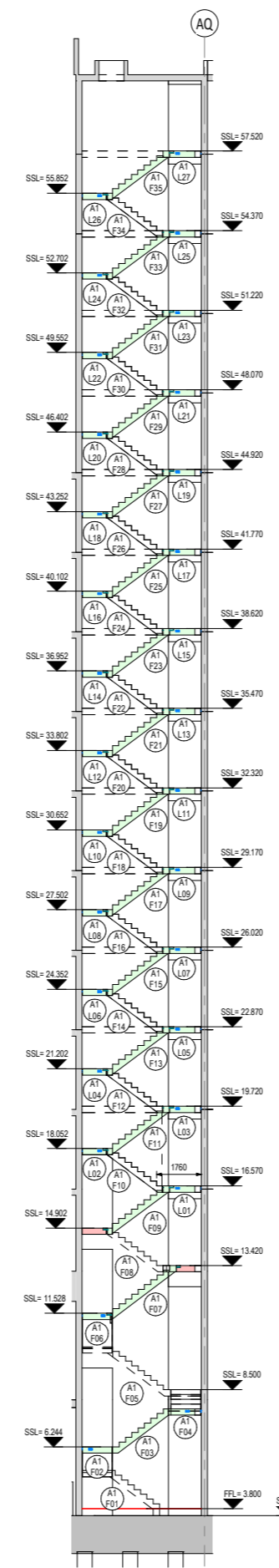
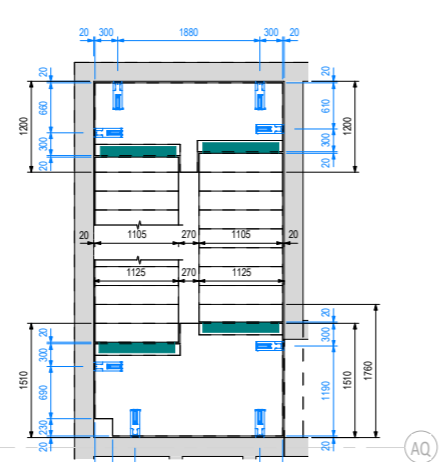
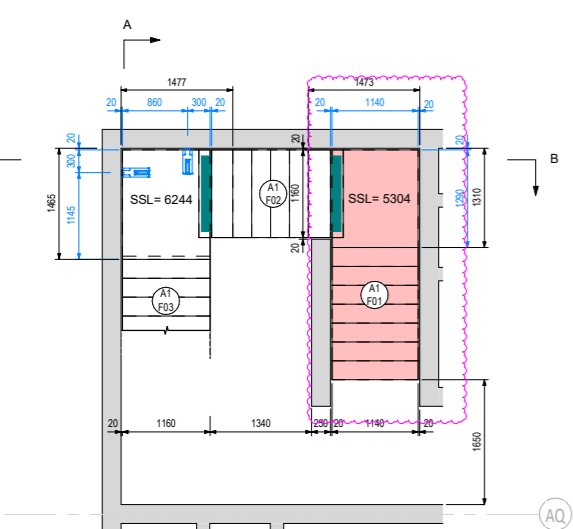
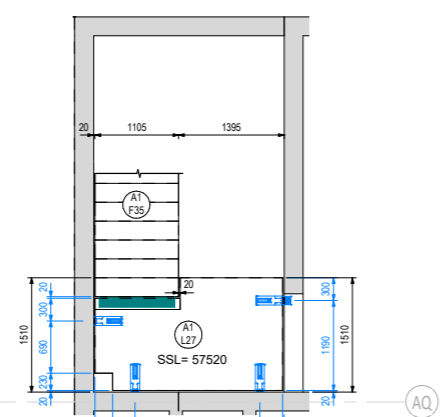
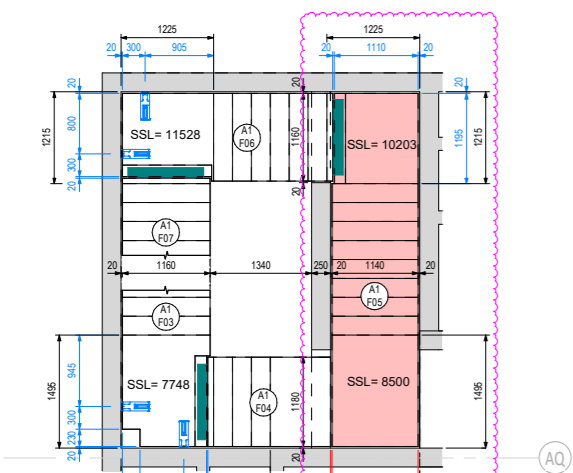


Block A1 - Precast Stairs - Weight		Block A1 - Precast Stairs - Weight	
Mark	Weight	Mark	Weight
A1 F01	2605 kg	A1 L01	2024 kg
A1 F02	1366 kg	A1 L02	1421 kg
A1 F03	3614 kg	A1 L03	2024 kg
A1 F04	1380 kg	A1 L04	1421 kg
A1 F05	3681 kg	A1 L05	2024 kg
A1 F06	2261 kg	A1 L06	1421 kg
A1 F07	2332 kg	A1 L07	2024 kg
A1 F08	2048 kg	A1 L08	1421 kg
A1 F09	2068 kg	A1 L09	2024 kg
A1 F10	1874 kg	A1 L10	1421 kg
A1 F11	2068 kg	A1 L11	2024 kg
A1 F12	1874 kg	A1 L12	1421 kg
A1 F13	2068 kg	A1 L13	2024 kg
A1 F14	1874 kg	A1 L14	1421 kg
A1 F15	2068 kg	A1 L15	2024 kg
A1 F16	1874 kg	A1 L16	1421 kg
A1 F17	2068 kg	A1 L17	2024 kg
A1 F18	1874 kg	A1 L18	1421 kg
A1 F19	2068 kg	A1 L19	2024 kg
A1 F20	1874 kg	A1 L20	1421 kg
A1 F21	2068 kg	A1 L21	2024 kg
A1 F22	1874 kg	A1 L22	1421 kg
A1 F23	2068 kg	A1 L23	2024 kg
A1 F24	1874 kg	A1 L24	1421 kg
A1 F25	2068 kg	A1 L25	2024 kg
A1 F26	1874 kg	A1 L26	1421 kg
A1 F27	2068 kg	A1 L27	2055 kg
A1 F28	1874 kg	A1.O F1	3325 kg
A1 F29	2068 kg	A1.O F2	2920 kg
A1 F30	1874 kg	A1.O F3	2473 kg
A1 F31	2068 kg	A1.O F4	2755 kg
A1 F32	1874 kg	A1.O L1	1567 kg
A1 F33	2068 kg	A1.O L2	2609 kg
A1 F34	1874 kg	A1.O L3	1582 kg
A1 F35	2068 kg	A1.O L4	2808 kg



**Legend:**

- ⊕ Lifting Pins: PCT - LSF50/120 or equivalent
- ▭ Precast element
- ▭ In-Situ element
- ⊕ Invisible Connections: RVK 101
- ⊕ Invisible Connections: RVK 101 - 30

- Notes:
- Do not scale from this drawing. Use figure dimensions only.
  - This drawing is to be read in conjunction with all related Architects, Consultants & Sub-Contractors drawings and specifications.
  - The contractor is advised that all design drawings and information are to be read concurrently and any discrepancies or omissions reported directly to Simtrical Structural Department.
  - The contents of this drawing may not be reproduced in whole or in part without the prior written permission of Simtrical Ltd.
  - Stairs and landings are designed to carry the following loads in addition to self weight:  
Live load: 3.00 kNm<sup>2</sup>  
Finishes: 0.00 kNm<sup>2</sup>
  - Concrete C40/50.
  - Cover to main reinforcement to be 35mm.
  - Fire rating 90 minutes.
  - Typical cover to stair angle is 25mm.
  - No alteration to the precast elements should be carried out without permission from GCL design dept.
  - If the screed to landing is to be placed by concrete skip then the conc. should not be dropped from a height greater than 600mm above the P.C. units.
  - The construction load should not exceed 1.5 kNm<sup>2</sup> + weight of screed.
  - All the precast elements have a 20mm gap tolerance in every direction UNO.
  - Tolerance gap between precast stair support & landing to be filled by main contractor.
  - Lifting: Stairs & slabs must be lifted using all the lifting eyes provided.

Rev	Description	By	Date	CHKD
P02	Precast flight made in-situ.	IC	Date 8	SP
F01	First issue.	IC	24.02.2020	SP

**SIMTRIC**  
a n e d y n a m i v i e w

3 Horizon Place, Studio Way  
Borehamwood  
Hertfordshire, WD6 5FP

T: +44 (0) 208 238 7650  
W: www.simtrical.co.uk  
E: office@simtrical.co.uk

Client Details:  
**BERKELEY HOMES**

Project Details:  
**OVALL VILLAGE**

Drawing Title:  
**Block A - Stair Core A1 GA**

Scale	Date	Drawn By:	Checked By:	Approved By:
As indicated	Feb '20	IC	SP	SP

Drawing Number	Revision
R459-GCL-A1-ZZ- DR-X-24010	P02